

DOORS OPEN HAMILTON 2022 (includes virtual and in-person sites)

Shawn & Ed Brewing Co. (in-person and virtual site)

CONTACT INFO

65 Hatt Street
Dundas, Ontario
<https://www.lagershed.com>
taproom@lagershed.com

ARCHITECTURE

Year built: **1885-6**
Building type: brewery (originally built as an indoor ice rink)
Architect: **Peter Brass**

DESCRIPTION

The Shawn & Ed Brewing Co. stands in the centre of the former industrial sector of the Town of Dundas on Hatt Street, one street south of the main commercial thoroughfare: King Street West at the south-east corner of Sydenham and Hatt streets. Opposite the brewery on the south side of Hatt Street is the former Valley City Manufacturing Co.'s main building complex at 64 Hatt Street (also an in-person and virtual site on Doors Open Hamilton 2022). This large post-and-beam structure with brick masonry walls and a front-gabled roof was designed and built by Hamilton architect and contractor Peter Brass (1838-1904). It was originally constructed in 1885-6 to house an indoor rink for the Dundas Curling & Skating Club. However, this use was short-lived and it then served as a warehouse for the Caldwell Feed Company. From 1922 to the 1950s the building served as a garage and depot for the Highway King Bus Lines (merged with Canada Coach Lines Ltd. in the 1930s) which initially ran buses between Dundas and downtown Hamilton but later to other towns in the Golden Horseshoe area. It was subsequently home to a variety of manufacturing businesses until 1974, when it was acquired by the Valley City Manufacturing Co. for use as an upholstery warehouse for their furniture-making business and wood storage facility. In November 2012, the building was purchased by Ed Madronich (owner of the *Flat Rocks Cellars* winery in Jordan) and Shawn Till. Their bold vision to convert the building into a craft brewery was realized in 2015-16. When a new metal roof was installed, the original skylights were re-opened allowing natural light to flood into the interior. After facing many construction challenges, the brewery was officially opened on [March 31, 2016](#), when the first 12 oz. glass of *LAGERshed* was ceremoniously poured, with beer flowing from the spigots of the gigantic stainless-steel fermentation tanks.

Architecturally, the building is a representative example of a late Victorian indoor ice rink for skating and curling and one of the earliest facilities of its kind in Canada. The building retains its original front-gabled roofline with truncated ends. An 1896 photo of the building reveals that the original façade featured a central arched carriage doorway flanked by brick piers which terminated in pinnacles. Unsympathetic alterations in the past included the removal of the pinnacles and the replacement of

the carriage doorway with a larger overhead rolling door, probably installed in the 1950s to accommodate larger buses when the building still served as a bus depot.

SHED Brewing is also an in-person site as part of Doors Open Hamilton 2022, which takes place on Saturday May 7 and May 8 with the brewery open both days from 11 to 4. Tours will be offered continuously throughout both days of the event and will include an explanation of the SHED brewing process and equipment. At other times, 20-minute tours of the brewery may be booked on its [website](#). The taproom serves up a variety of lagers and ales bearing such imaginative names as *LagerSHED*, *BarrelSHED* and *OctoberSHED*, which may be purchased by the glass or as a *tasting paddle*. Bottled beer, oven-baked “beer pies” and a selection of *Flat Rock Cellars* wine (take-home bottles and by the glass) are available for purchase in the retail area. The facility has also evolved into an entertainment venue, hosting concerts and weekly events such as *Trivia Night* and *Music to our Beers*, with a stage located against the back wall. This local landmark has proved to be a great asset to downtown Dundas, drawing visitors from outside the area, and a popular place with locals to enjoy a beer with friends.

For a more detailed description of the history of this site and the renovations undertaken for the brewery conversion, read [this article](#) published in the Spring 2016 issue of the ACO’s magazine ACORN with the theme *An Appetite for Heritage: “From Malting to Skating – Bringing Beer to Dundas”*.



Front (south) façade of the Shawn & Ed Brewing Co. in March 2022. On the left is a new fire exit doorway and restricted access doorway for staff. The doorway at the east end serves as the entrance for customers. Truck deliveries are made through the rolling door entrance. As soon as the weather warms up, the forecourt will be transformed into a busy outdoor patio in use through early fall. (Chris/Carol Priamo)



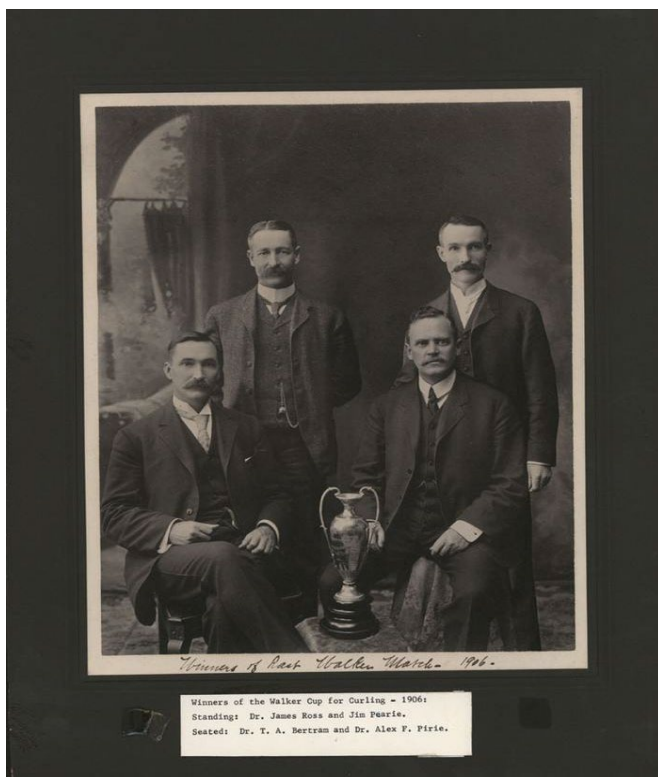
The long east façade of the building when renovations were nearing completion in March 2016. (Ann Gillespie – AG)



The Dundas Curling & Skating Rink, circa 1896. Photo shows the original façade with a single carriage entrance, and the original windows, four of the eight skylights and three square roof vents. (*Picturesque Dundas* – 1972; reprint of original 1896 publication. (Dundas Museum & Archives: DM&A)



The Dundas Curling & Skating Rink, after a major snowfall, looking north-west from the south side of Hatt Street circa 1900. (DM&A)



1906 group portrait of the winners of the Walker Cup for curling at the Dundas Curling & Skating Club. (DM&A: P-1153)



A horse-drawn parade float for the Valley City Seating Co. in front of the Dundas Curling & Skating Rink, circa 1910. Shows the double diagonal board doors of the carriage entrance with a voussoir-arched brick lintel and transom light. (DM&A: GN-0346 - cropped)



Circa 1981 photo of the Valley City Manufacturing Co., after the piers flanking the rolling door had been cut back to the roofline and the original skylights covered (likely at some point when the building was re-roofed). By this time two of the window openings on the east side of the rolling door had been replaced by two doorways, possibly when the building was converted to a bus depot. All other windows are still the original two-over-two paned wood sash ones. (Dale Creasy, unused photo for the *Picturesque Dundas Update – 1981*, DM&A)



Interior while renovations were still ongoing in January 2016, completed in time for the official opening on March 31, 2016. The stainless-steel tanks were supplied by an Italian company and shipped across the Atlantic. (Jeremy Parsons)



View of the interior while still under construction in January 2016, looking towards the front entrance and showing the east wall rebuilt with concrete block, as explained below. The framed mezzanine level was intended to provide office space with washrooms on the ground floor. (Jeremy Parsons)



Interior view of the east wall showing exposed sections of the east wall that had to be rebuilt with concrete block after a “freak accident”. On the morning of December 8, 2000, a dump truck had a break failure while travelling down the very steep Sydenham Hill. The truck safely rolled through the intersection at King Street, veered into the parking lot on the east side of the warehouse and crashed through the brick masonry wall (<https://www.lagershed.com/our-story>) of the Valley City warehouse.

Miraculously, there were no casualties and the truck driver only suffered cuts and bruises. The entire east wall from this point up to the south-east corner of the building was subsequently rebuilt with concrete block faced with reclaimed bricks, which were also used to clad the interior east wall, shown here in March 2016. (AG)



View of the front wall in March 2016, as partially reconstructed in 2000 with concrete block following the truck accident described in the previous photo, which also caused extensive damage to the south facade. The partition wall was erected to separate the public and production areas. (AG)



South and east facades in March 2022, showing two of the original roof vents and a larger central one installed since 1981. The stove pipe serves as a vent for the wood-fired pizza oven. All of the photos below except where noted were taken by the author (AG) in March 2022.



Close-up view showing the replacement steel windows with a two-over-two configuration replicating the original wood sash windows and shaped to fit the voussoir-arched brick lintels.



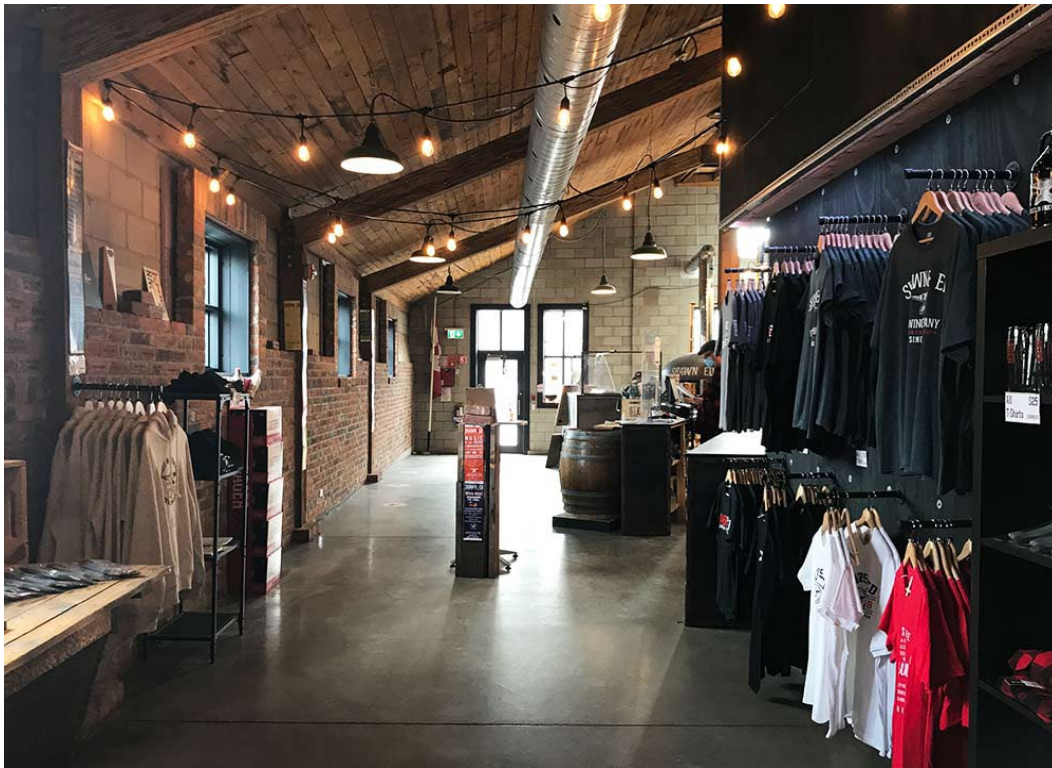
One of four mysterious bricked-in openings on the east façade.



Inside the retail area at the front of the building where their specialty “Beer Pies” are baked in this wood-fired oven, which is also used to bake nachos. This photo and the following ones were taken by the author in March 2022, except where otherwise noted.



The retail counter for the sale of “Beer Pies”, four and six packs of bottled beer and a variety of merchandise.



View looking towards the front entrance through the merchandise display of sweatshirts, T-shirts, tuques, caps, socks, tote bags and, of course, the signature Shawn & Ed beer glasses.



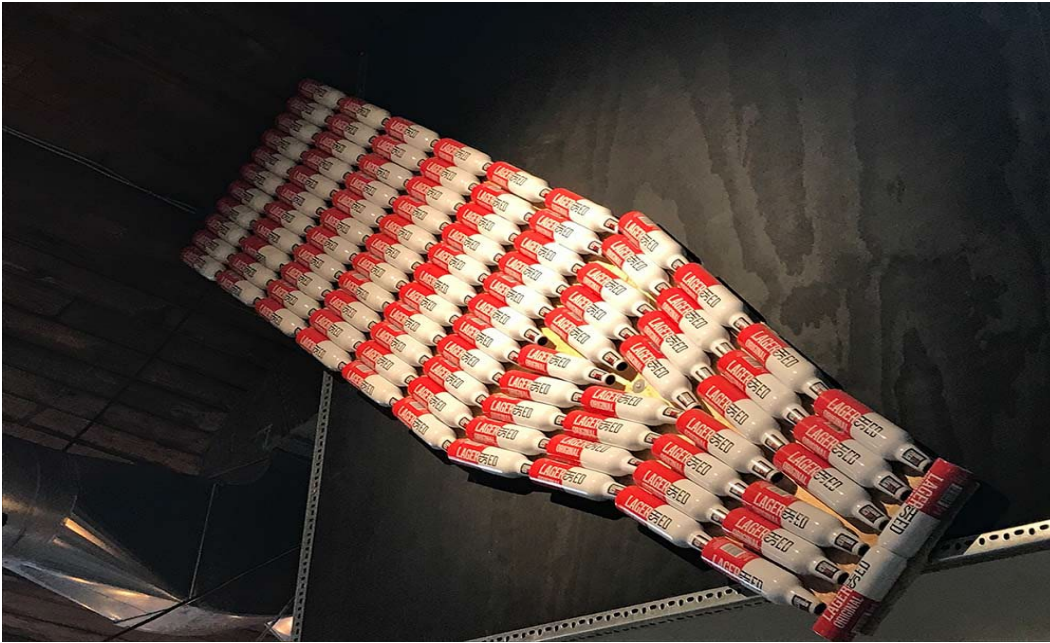
Above the tote bag display are reclaimed bricks offered for \$225 each with the purchaser's name stencilled on the brick. It is hoped that eventually these bricks will completely cover the exposed concrete block wall sections shown in the previous March 2016 photo.



Taproom bar with its countertop made of wood reclaimed from the building. The 1930s photo above the beer selection panel is one of the Highway King Bus Lines's coaches from the era when the building served as a bus depot. At the bar, customers may purchase beer by the glass or as a "tasting paddle".



Rear portion of the wrap-around bar with a vintage photo of another Highway King bus (circa 1925) above the beer selection panel. Filled growlers or refills are also sold at the bar.



A creative wall-mounted sculpture assembled from and in the shape of the unique, custom-made *Big Large* (473 ml.) aluminum bottles is located above the corridor to the washrooms (below).



Framed sections of bus destination scrolls dating back to the building's use as a bus depot now decorate the walls of the washroom corridor.



The stainless-steel tanks used in the beer-making process. Visit the brewery and take a tour to learn what the various sized tanks are used for. The large custom-made wood barrel is now used to ferment the BarrelSHED Amber Ale.



The production area bounded by the low concrete wall with the bar on the right. (Chris/ Carol Priamo)



A quiet Sunday evening view of the seating area looking towards the stage at the far rear end of the building.



This vintage truck was made in the Studebaker plant, which opened in Hamilton's east end industrial sector in 1948. In 1949, it was shipped to a farm in Manitoba, where it was used for transporting barley to be processed nearby in local breweries. In 2017, the truck was donated to the Shawn & Ed

Brewing facility, where it stands on display in the production area loaded with cases of bottled LagerSHED. A very fitting final destination!



Interior view looking through the seating areas towards the back wall, showing the roof trusses and one of the restored skylights (above the first post).



One of several bus destination scrolls found in the building from its days as a bus depot. The scroll was hand-cranked by the driver to show his next destination at the top. These empty *Flat Rock Cellars* Pinot Noir barrels were originally used to make Shawn & Ed's BarrelSHED ale and are still occasionally used for special brews.



THANKS FOR TAKING THIS VIRTUAL TOUR – time for a refreshing glass of LagerSHED or perhaps a stronger brew like Anvil Ale or BarrelSHED. There is also a changing seasonal selection of beers to choose from, for on-site consumption or growler fills. **CHEERS!** (Two19 Photography)